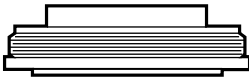


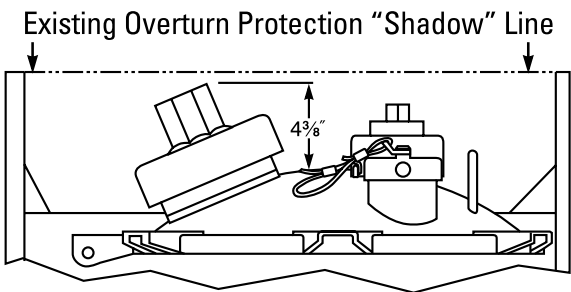
FUNCTION

Girard's Special Low Profile "Weld-In" (LW) Series DOT 407 Vent combines an ultra-low profile, light weight design with high flow rates to meet the most demanding needs of virtually any tank. See the table below for specific flow rates. The LW Vent welds directly to your manlid, thus avoiding expensive hot-work to the shell of your tank, and is low enough to be "retro-fitted" to most any tank without having to alter the overturn protection.

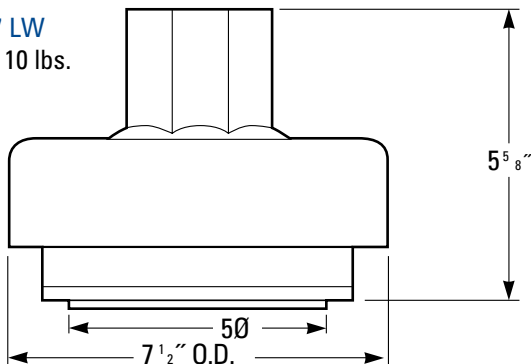
PERFORMANCE SPECIFICATIONS

MAWP	TEST PRESSURE	FLOW (SCFH)	EXPOSED SURFACE
25	40	374,512	737
25	45	431,308	946
30	45	431,308	946
35	52.5	484,718	1156

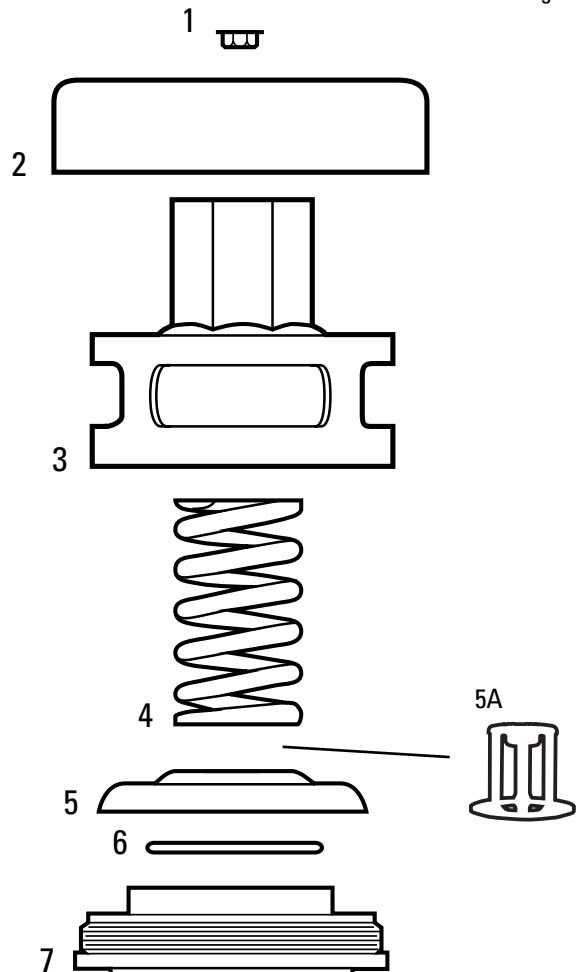
Styles	Description
 <p>402017</p>	LW Vent - Designed to weld directly to a domecover.



DOT 407 LW
Weight: 10 lbs.



ITEMS	PART NUMBER	DESCRIPTION
1	402019	Upper Housing Hole Plug
2	402003L	Low Profile Rain Cover
3	402004L	Low Profile Upper Housing with Hole-Specify MAWP
4	402005 402005HP	Spring (for MAWP < 45 only) Spring (for MAWP > 45 only)
5	402006LN	Low Profile Poppet with nut Spring Retainer (sold with GB25010)
5A	GB25010	Spring Retainer for Pressure Only Vents (sold separately)
6	402007	Teflon® Silicone "O" Ring
7	402017	LW Model Lower Housing



SUPERDOME
Girard can design and fabricate any configuration dome lid arrangement. Ask our sales people for more information. See details on page A6